

Beachwalker Drive Pedestrian and Bicycle Safety Action Plan

Kiawah Island, South Carolina

June 10, 2021

Prepared for:



Prepared by:

Kimley»»Horn

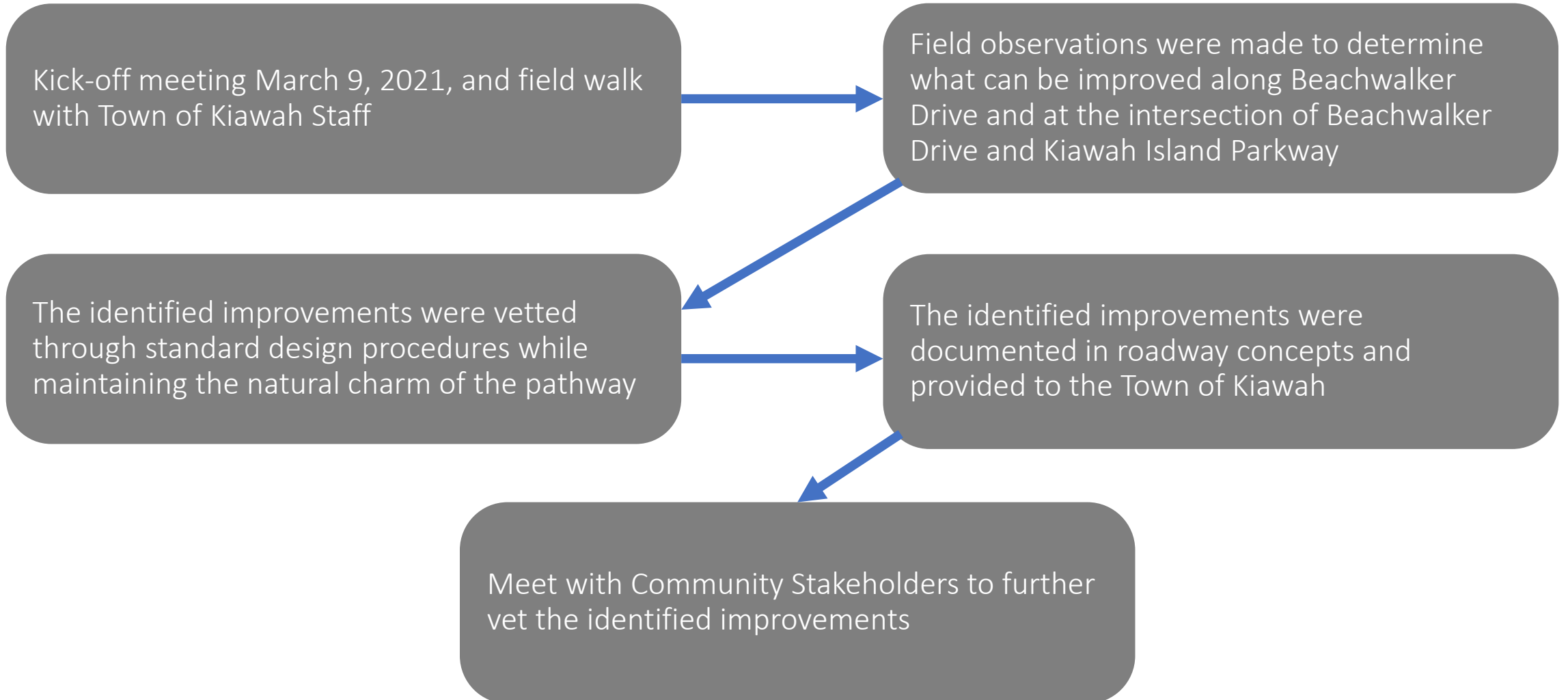


Study Approach

- 1 Meet with the Town of Kiawah Island
- 2 Collect Data
- 3 Observations, Analysis, Evaluation, & Concept Recommendations
- 4 Review with the Town of Kiawah Island
- 5 Finalization of Concepts



Approach



Observations

Pathway Leads Through the Middle of Beachwalker Drive at Kiawah Island Parkway Intersection



Unmarked Pathway at Riverview



Tree Root Breaking Up the Path Asphalt



Pathway Too Narrow for Two Bicyclist



Inconsistent Pathway Widths



Pathway Becomes Part of Vehicular Right-Turn Lane with Limited Sight Distance at Sunlet Blvd and Belmeade Hall



Concept 1 – Improvements Near Beachwalker County Park



Raised Concrete Median Example- Duneside Drive



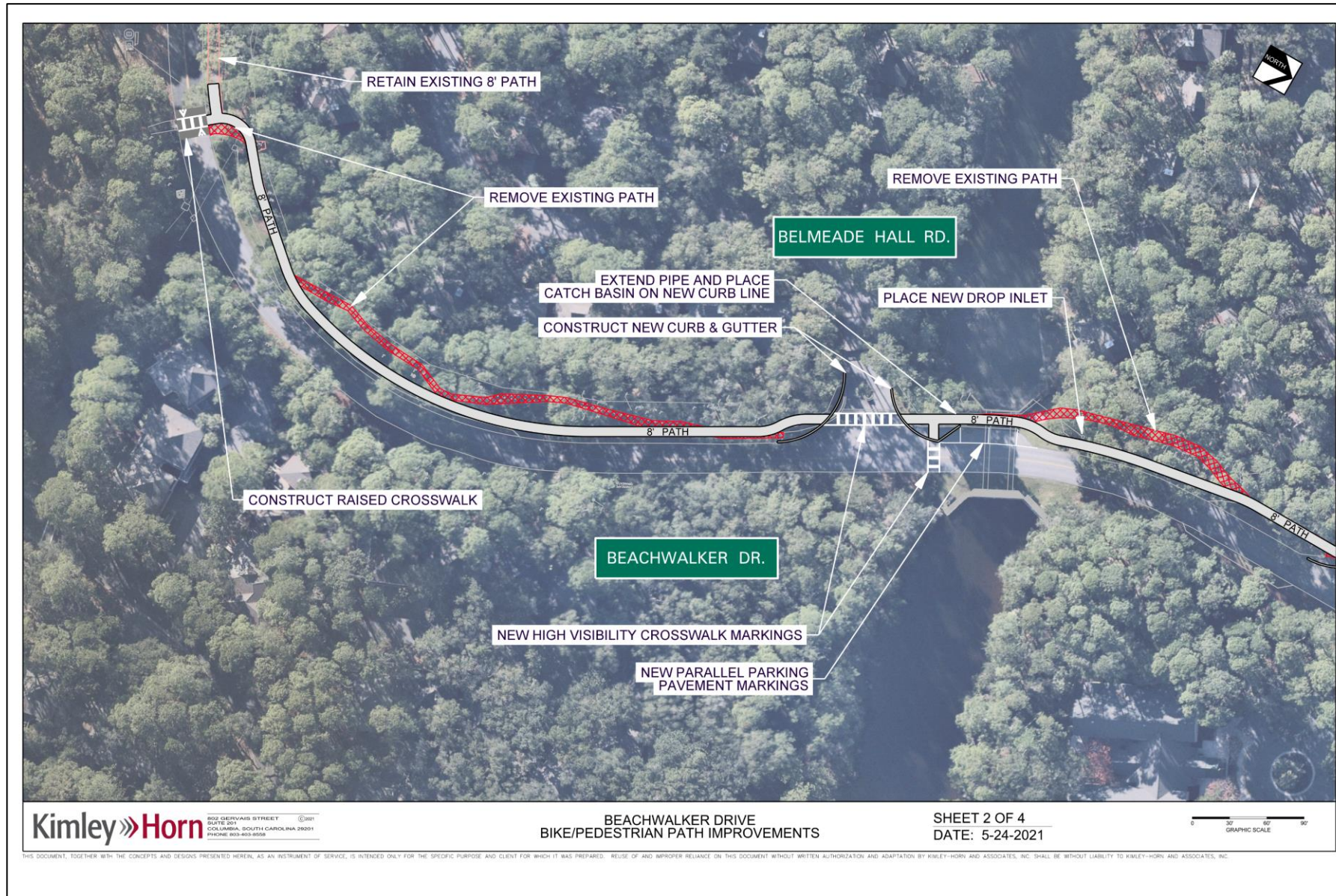
Rectangular Rapid Flashing Beacon (RRFB)



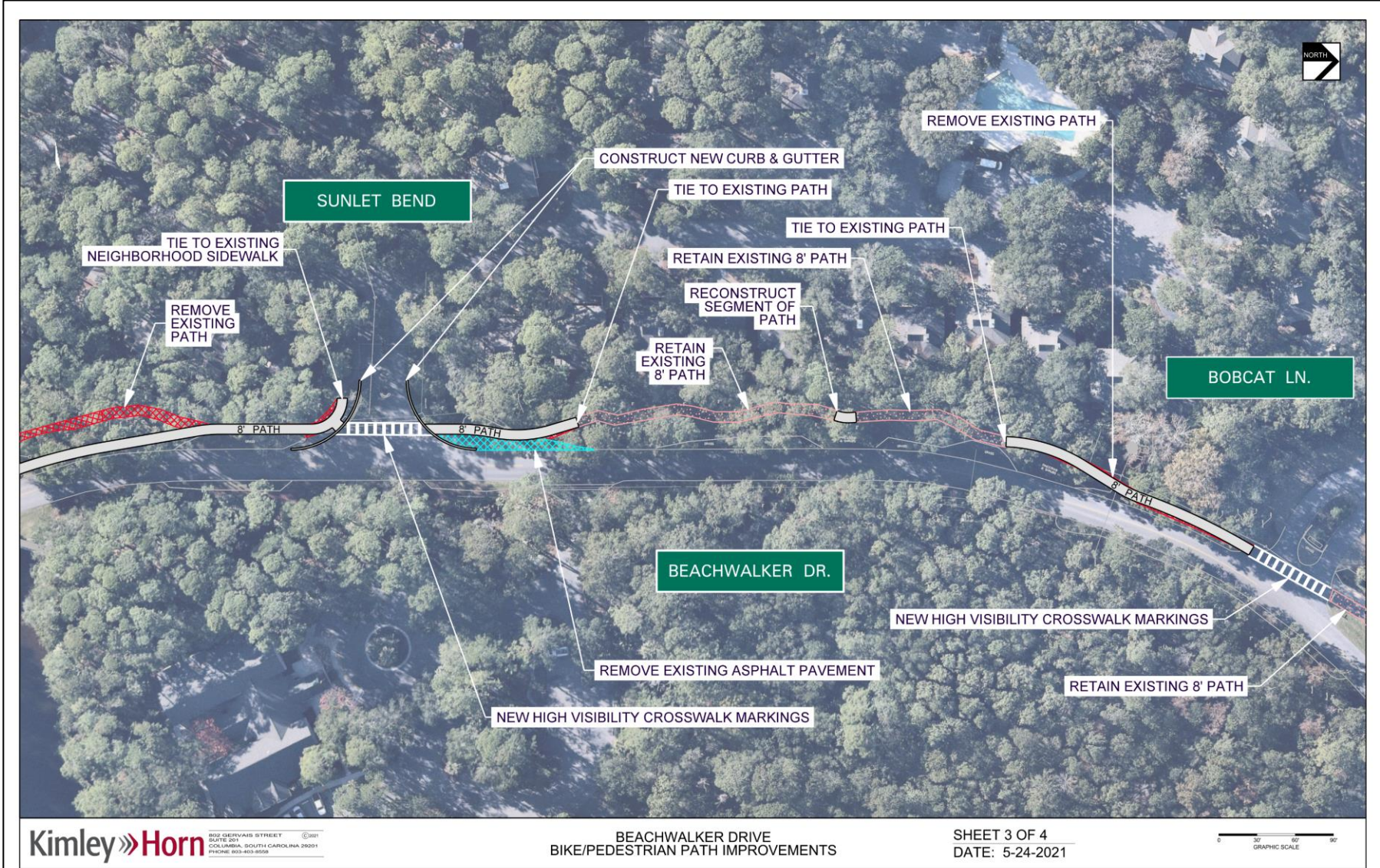
Source: <https://bikewalkcentralflorida.org/2018/01/12/federal-highway-rescinds-approval-rrfb/>
Video: <https://www.tapconet.com/product/rrfb-pedestrian-crosswalk-system>



Concept 2 – Improvements Near Belmeade Hall Rd.



Concept 3 – Improvements Near Sunlet Blvd/Bobcat Ln.



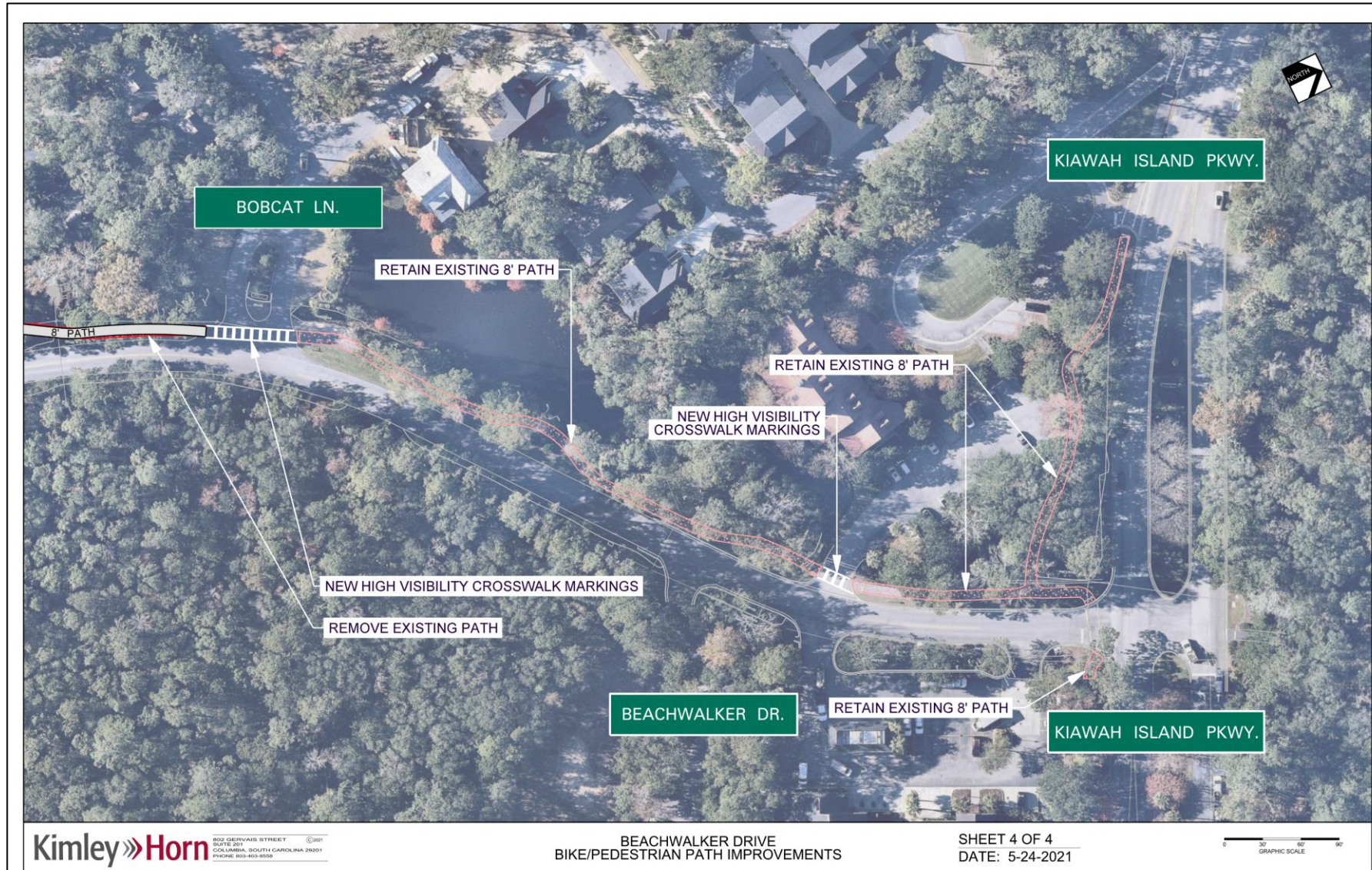
Kimley»Horn
 8022 GERRARD STREET
 SUITE 200
 COLUMBIA, SOUTH CAROLINA 29201
 PHONE: 803-403-8555

**BEACHWALKER DRIVE
 BIKE/PEDESTRIAN PATH IMPROVEMENTS**

**SHEET 3 OF 4
 DATE: 5-24-2021**

THIS DOCUMENT, TOGETHER WITH THE CONCEPTS AND DESIGNS PRESENTED HEREIN, AS AN INSTRUMENT OF SERVICE, IS INTENDED ONLY FOR THE SPECIFIC PURPOSE AND CLIENT FOR WHICH IT WAS PREPARED. REUSE OF AND IMPROPER RELIANCE ON THIS DOCUMENT WITHOUT WRITTEN AUTHORIZATION AND ADAPTATION BY KIMLEY-HORN AND ASSOCIATES, INC. SHALL BE WITHOUT LIABILITY TO KIMLEY-HORN AND ASSOCIATES, INC.

Concept 4 – Improvements Near Kiawah Island Pwky.



Concept 5 – Options for Pathway Crossing at the Main Gate



THIS DOCUMENT, TOGETHER WITH THE CONCEPTS AND DESIGNS PRESENTED HEREIN, IS INTENDED ONLY FOR THE SPECIFIC PURPOSE AND CLIENT FOR WHICH IT WAS PREPARED. REUSE OF AND IMPROPER RELIANCE ON THIS DOCUMENT WITHOUT WRITTEN AUTHORIZATION AND ADAPTATION BY KIMLEY-HORN AND ASSOCIATES, INC. SHALL BE WITHOUT LIABILITY TO KIMLEY-HORN AND ASSOCIATES, INC.



Option 3 – Pathway Relocation Connection



THIS DOCUMENT, TOGETHER WITH THE CONCEPTS AND DESIGNS PRESENTED HEREIN, IS INTENDED ONLY FOR THE SPECIFIC PURPOSE AND CLIENT FOR WHICH IT WAS PREPARED. REUSE OF AND IMPROPER RELIANCE ON THIS DOCUMENT WITHOUT WRITTEN AUTHORIZATION AND ADAPTATION BY KIMLEY-HORN AND ASSOCIATES, INC. SHALL BE WITHOUT LIABILITY TO KIMLEY-HORN AND ASSOCIATES, INC.



Concept 6 – Beachwalker Drive at Kiawah Island Parkway



Kimley»Horn
809 GERVASIO STREET
SUITE 200
COLUMBIA, SOUTH CAROLINA 29201
PHONE: 803-403-8508

KIAWAH ISLAND PARKWAY
RIGHT LANE DROP IMPROVEMENTS

DATE: 6-11-2021

0 30 60 90
GRAPHIC SCALE

THIS DOCUMENT, TOGETHER WITH THE CONCEPTS AND DESIGNS PRESENTED HEREIN, AS AN INSTRUMENT OF SERVICE, IS INTENDED ONLY FOR THE SPECIFIC PURPOSE AND CLIENT FOR WHICH IT WAS PREPARED. REUSE OF AND IMPROPER RELIANCE ON THIS DOCUMENT WITHOUT WRITTEN AUTHORIZATION AND ADAPTATION BY KIMLEY-HORN AND ASSOCIATES, INC. SHALL BE WITHOUT LIABILITY TO KIMLEY-HORN AND ASSOCIATES, INC.

Concept 7 – Beachwalker Drive at Kiawah Island Parkway



Kimley»Horn
805 GERVASIO STREET
SUITE 200
COLUMBIA, SOUTH CAROLINA 29201
PHONE: 803-403-8508

KIawah ISLAND PARKWAY
"ZIPPER" MERGE IMPROVEMENTS

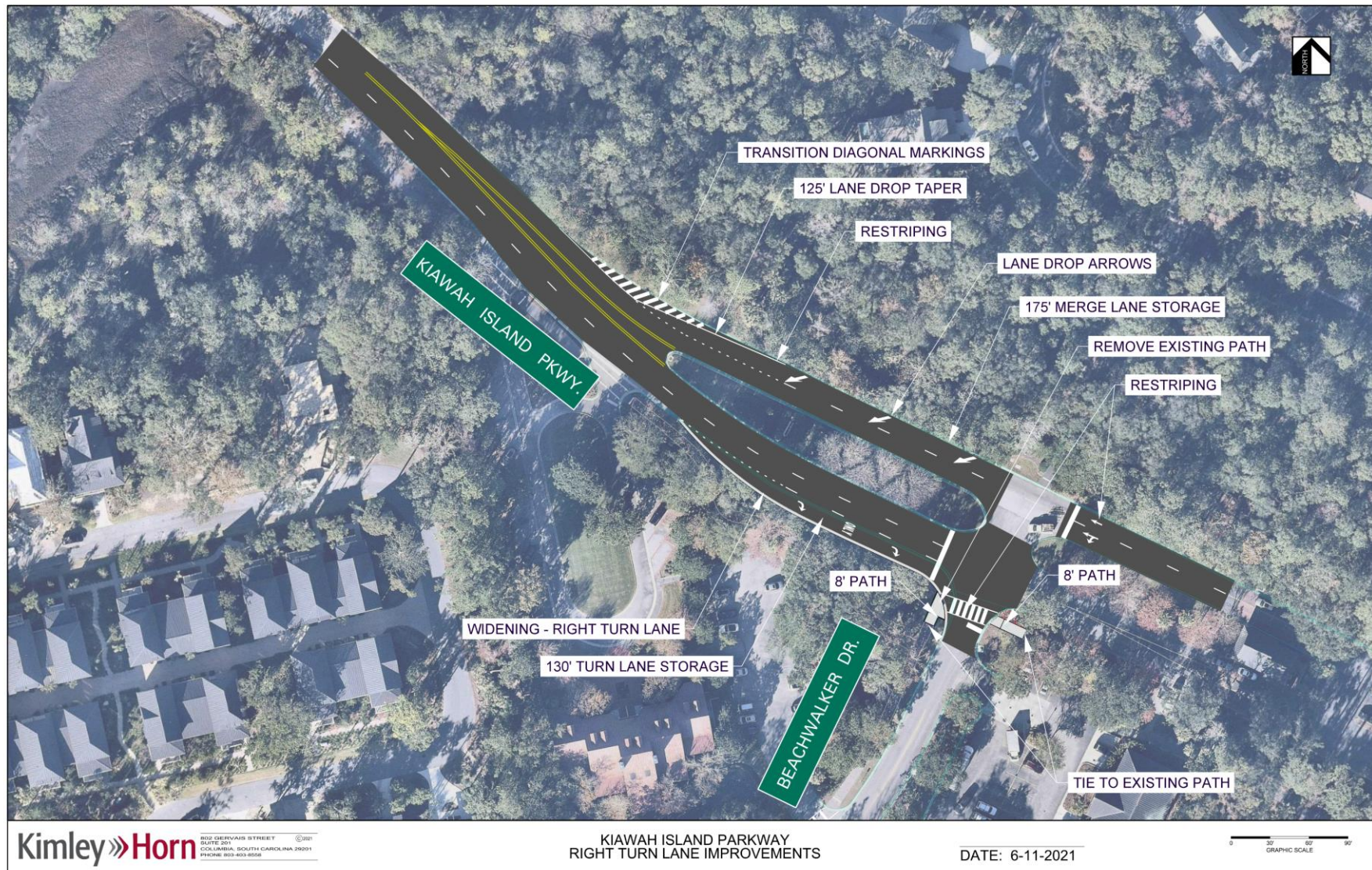
DATE: 6-11-2021

0 20 40 60 80
GRAPHIC SCALE

THIS DOCUMENT, TOGETHER WITH THE CONCEPTS AND DESIGNS PRESENTED HEREIN, AS AN INSTRUMENT OF SERVICE, IS INTENDED ONLY FOR THE SPECIFIC PURPOSE AND CLIENT FOR WHICH IT WAS PREPARED. REUSE OF AND IMPROPER RELIANCE ON THIS DOCUMENT WITHOUT WRITTEN AUTHORIZATION AND ADAPTATION BY KIMLEY-HORN AND ASSOCIATES, INC. SHALL BE WITHOUT LIABILITY TO KIMLEY-HORN AND ASSOCIATES, INC.



Concept 8 – Beachwalker Drive at Kiawah Island Parkway



Concept 9 – Beachwalker Drive at Kiawah Island Parkway



Kimley»Horn
805 GERVASIO STREET
SUITE 200
COLUMBIA, SOUTH CAROLINA 29201
PHONE: 803-403-8506

KIAWAH ISLAND PARKWAY
MEDIAN/TURN LANE IMPROVEMENTS

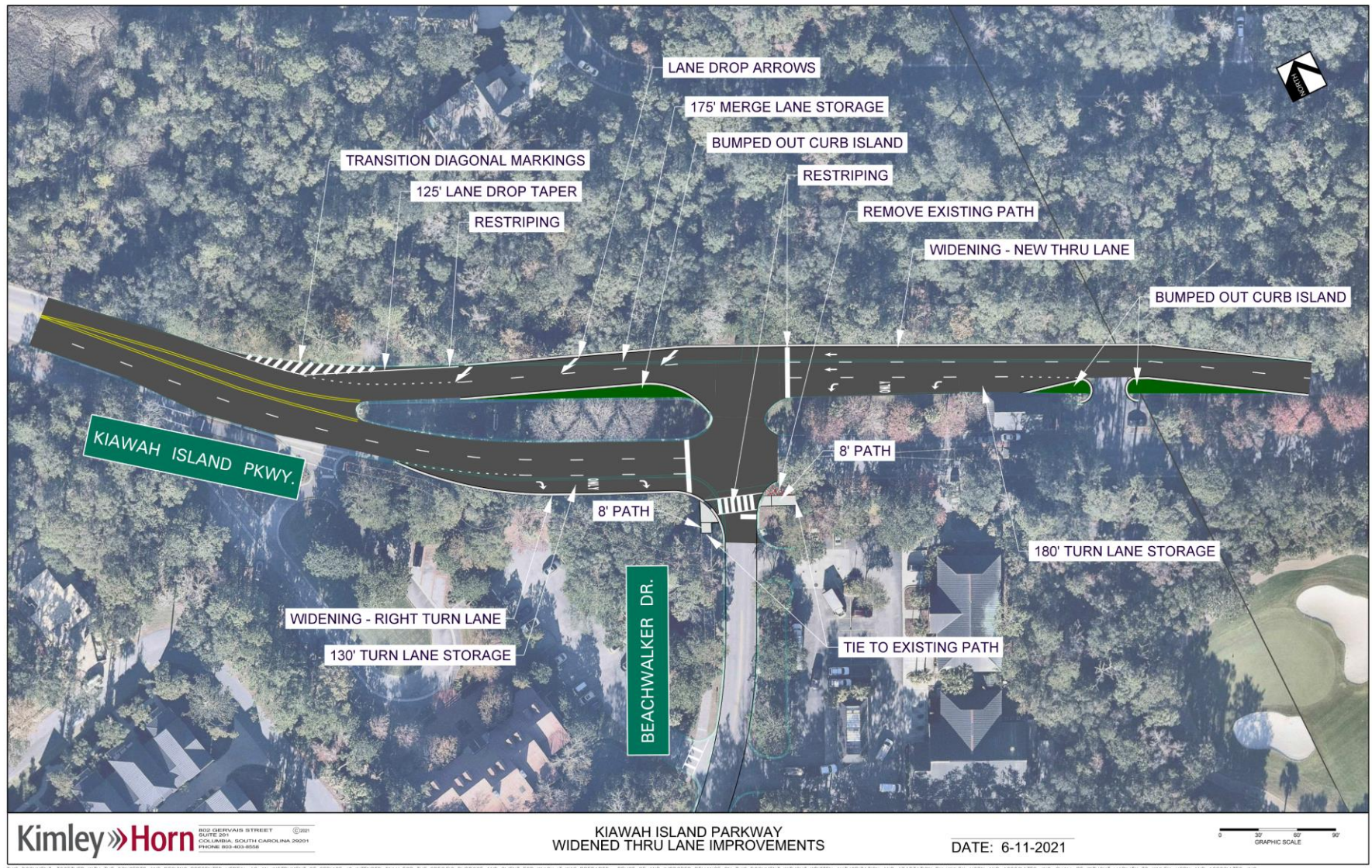
DATE: 6-10-2021

0 30 60 90
GRAPHIC SCALE

THIS DOCUMENT, TOGETHER WITH THE CONCEPTS AND DESIGNS PRESENTED HEREIN, AS AN INSTRUMENT OF SERVICE, IS INTENDED ONLY FOR THE SPECIFIC PURPOSE AND CLIENT FOR WHICH IT WAS PREPARED. REUSE OF AND IMPROPER RELIANCE ON THIS DOCUMENT WITHOUT WRITTEN AUTHORIZATION AND ADAPTATION BY KIMLEY-HORN AND ASSOCIATES, INC. SHALL BE WITHOUT LIABILITY TO KIMLEY-HORN AND ASSOCIATES, INC.



Concept 10 – Beachwalker Drive at Kiawah Island Parkway



Concept 11 – Beachwalker Drive at Kiawah Island Parkway

